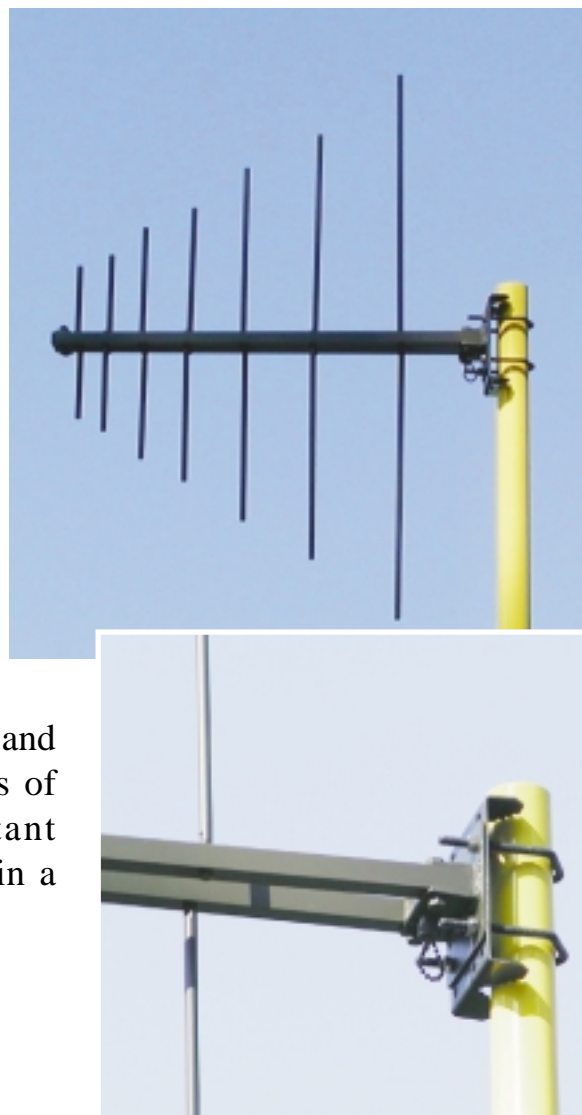


The antenna AD-22/B is a log-periodic dipole antenna covering the frequency range from 200 to 470 MHz. The antenna is composed of a boom element and 7 dipoles connected to the boom by special screw joints and protected of loosening it with nylon ropes. All dipole elements and boom are made of aluminum alloy and joints are made of stainless steel. Beside that there is also an antenna support mounted on the boom element, constructed for easy change of antenna polarization. The antenna support enable mounting the antenna on masts with outer diameter between 20 and 60 mm. The antenna is primarily intended for use as transportable but it can be used also as stationary due to construction of elements and materials enabling long life. All metal parts of the antenna are painted with UV resistant polyurethane paint. The antenna is packed in a handy transportable linen bag.



TECHNICAL DATA	
Frequency range	200 - 470 MHz
Impedance	50 ohm
VSWR	< 2
Gain	7 dBi
Front-to-back ratio	> 20 dB
Polarization	HOR./VER.
Maximum power	200 W CW
Length	1,0 m
Width	0,7 m
Mass	3 kg
Wind velocity	120 km/h
Temperature range	-40...+70 C

