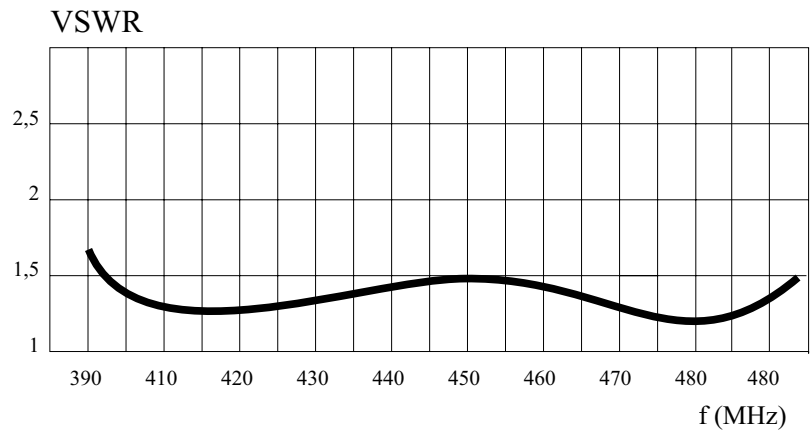
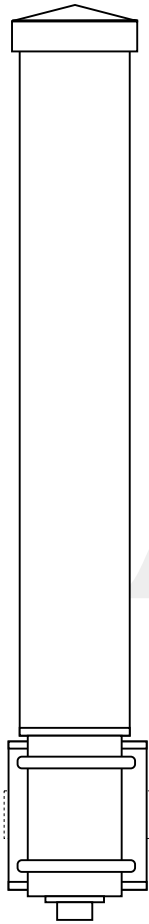


Antenna AD-12/B is wideband UHF antenna covering frequency range from 390 to 480 MHz and is intended for stationary use also in extreme hard climatic environment. Electrically the antenna is designed as a dipole with added current choke enables low coupling between the antenna and the feeder cable. All metal parts of the antenna are grounded and enclosed in radome tube made of composite material (fiberglass) and painted with UV resistant two-component polyurethane paint. The support pipe is made of stainless steel. That construction enables the antenna long life and good resistance against atmospheric influences. The antenna could be mounted on the support tube with our standard console elements series ADK-....



TECHNICAL DATA	
Frequency range	390 - 480 MHz
Impedance	50 ohm
VSWR	< 1,6 (DIAG. 1)
Gain	2 dBi (0 dBd)
Polarization	VER.
Maximum power	500 W CW
Connector	N, 7/16
Height	0,72 m
Diameter of antenna	60 mm
Diam of support pipe	50 mm
Mass of antenna	4.8 kg
Wind velocity	180 km/h
Temperature range	-40....+70 °C



AD-12/B

