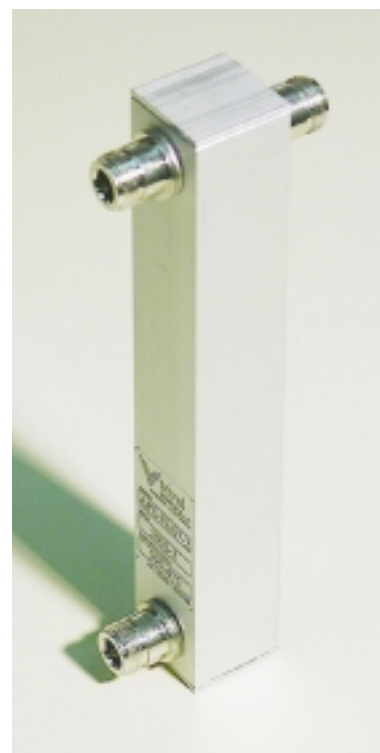
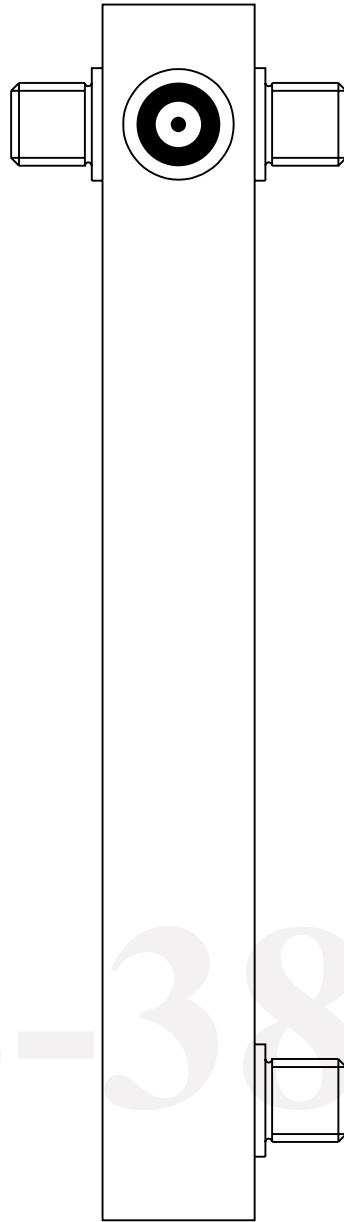
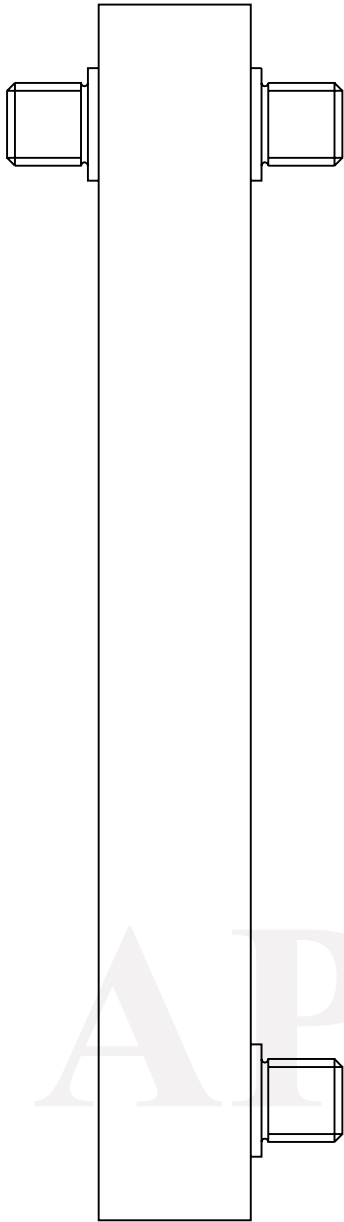


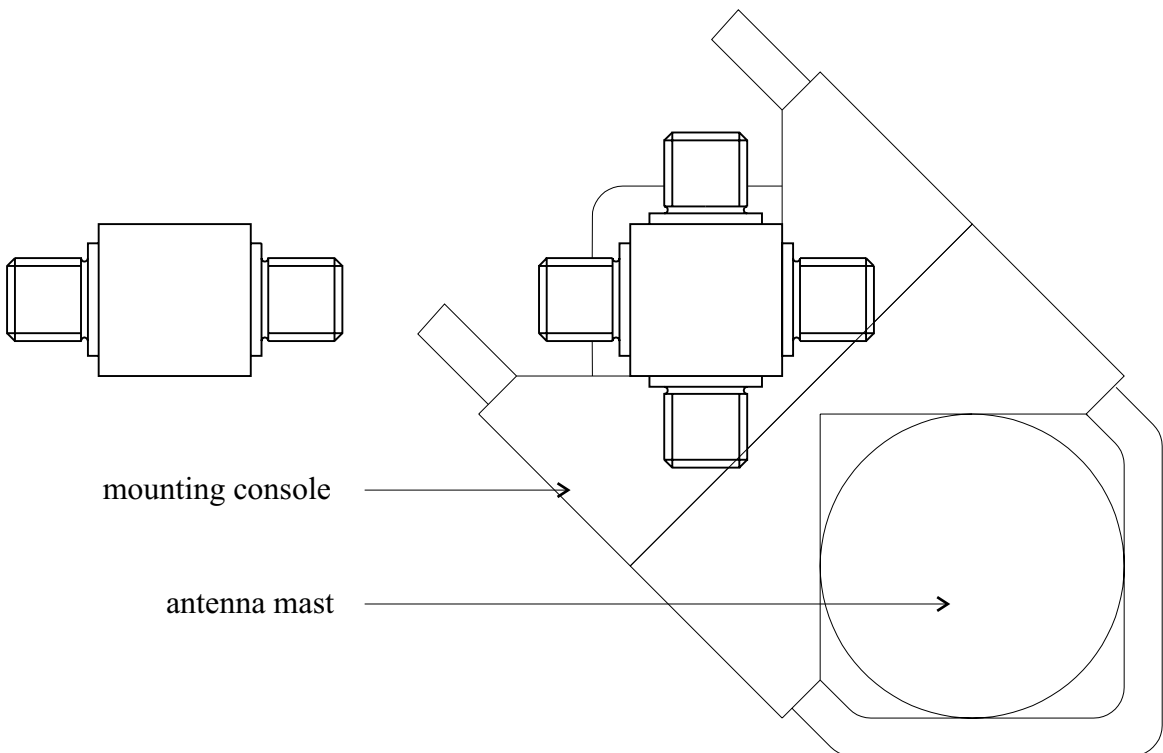
The family of power dividers type APS-38 is composed of two-, three- and four-way power dividers for use on standard VHF and UHF frequency ranges. Dividers enable connection of two or more antennas together in one antenna array or system. They are designed as passive dividers on the base of quarterwave line coaxial transformer with one input and two or more outputs. The outer section of the divider is made of aluminum alloy square tube with side mounted input and output connectors and transparently anodized. The divider could be mounted on mast with one of our standard universal mounting consoles family ADK.



TECHNICAL DATA	
Frequency range (MHz)	66-88, 146-176, 390-475
Impedance	50 ohm
VSWR	< 1,3
Maximum power	400 W
Connector	N fem.
Lenght	max. 100 cm
Mass	max. 0,5 kg



APS-38/...



mounting console

antenna mast